

CI Investment Grade Bond Private Pool

Series I CAD

Not available to retail investors / for approved investors only



AS AT DECEMBER 31, 2025

FUND OVERVIEW

The pool's investment objective is to provide income and the potential for long-term capital appreciation by investing primarily in a diversified portfolio of investment grade fixed-income securities issued by companies or governments primarily located in North America and Europe.

FUND DETAILS

Inception date	October 2018
CAD Total net assets (\$CAD) As at 2025-12-31	\$18.8 million
NAVPS	\$9.7684
MER (%) As at 2025-09-30	0.00
Management fee (%)	Negotiable
Asset class	Global Fixed Income
Currency	CAD
Minimum investment	Negotiable
Distribution frequency	Monthly
Last distribution	\$0.0297

Risk rating¹

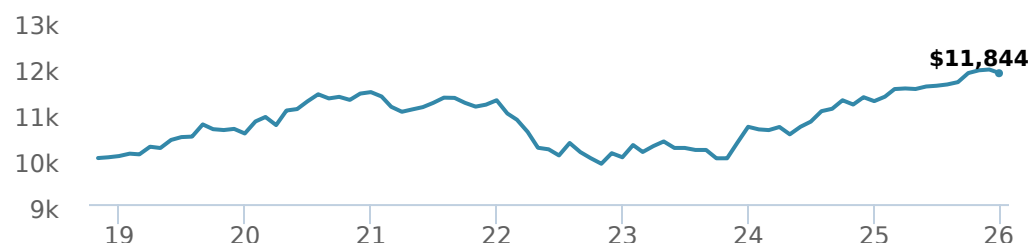


FUND CODES

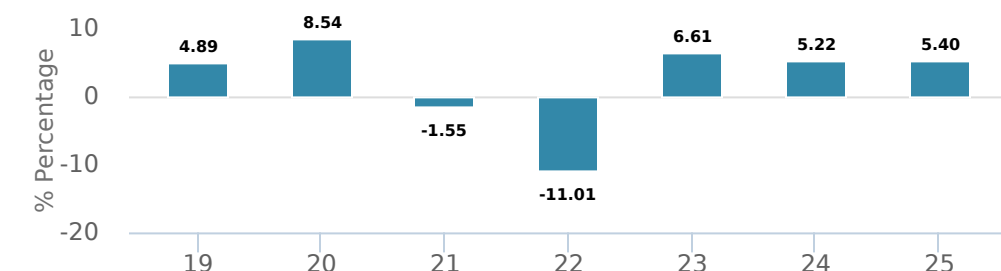
I	5060
A	2060
F	4060

PERFORMANCE²

Growth of \$10,000 (since inception date)



Calendar year performance



Average annual compound returns

YTD	1 Mo	3 Mo	6 Mo	1 Y	3 Y	5 Y	10 Y	Inception*
5.40%	-0.68%	-0.03%	2.35%	5.40%	5.74%	0.71%	-	2.39%

*Since inception date

DISTRIBUTION HISTORY³

Payable date	Total	Payable date	Total
2025-12-19	0.0297	2025-07-25	0.0306
2025-11-21	0.0276	2025-06-27	0.0369
2025-10-24	0.0214	2025-05-23	0.0367
2025-09-26	0.0404	2025-04-25	0.0469
2025-08-22	0.0260	2025-03-28	0.0373

MANAGEMENT TEAM

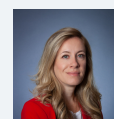
The Marret team (now part of CI Global Asset Management) focuses on fixed-income investing and alternative strategies on behalf of institutional, high net worth and retail clients.



Adam Tuer



Adrian Prenc



Leanne Ongaro

CI Investment Grade Bond Private Pool

Series I CAD

Not available to retail investors / for approved investors only



AS AT DECEMBER 31, 2025

PORTFOLIO ALLOCATIONS⁴

Asset allocation	(%)	Sector allocation	(%)	Geographic allocation	(%)
Canadian Corporate Bonds	48.89	Fixed Income	91.21	Canada	92.39
Canadian Government Bonds	35.84	Cash and Cash Equivalent	8.67	United States	7.26
Cash and Equivalents	8.67	Other	0.12	Other	0.35
Foreign Corporate Bonds	5.66				
Foreign Government Bonds	0.82				
Derivatives	0.07				
Other	0.05				

TOP HOLDINGS⁵

	Sector	(%)
1. Canada Government 3.25% 01-Jun-2035	Fixed Income	25.33%
2. Canada Government 2.75% 01-Sep-2030	Fixed Income	8.95%
3. CASH	Cash and Cash Equivalent	6.39%
4. Inter Pipeline Ltd 6.38% 17-Feb-2033	Fixed Income	2.34%
5. RioCan REIT 4.00% 01-Mar-2028	Fixed Income	1.36%
6. Videotron Ltd 5.70% 15-Oct-2034	Fixed Income	1.13%
7. Toronto-Dominion Bank 4.21% 01-Jun-2027	Fixed Income	0.93%
8. Pembina Pipeline Corp 3.62% 03-Apr-2029	Fixed Income	0.92%
9. Fairfax Financial Holdings Ltd 5.10% 16-Aug-2055	Fixed Income	0.89%
10. Transcanada Pipelines Ltd 5.28% 15-May-2030	Fixed Income	0.88%
11. Bank of Montreal 3.65% 01-Mar-2027	Fixed Income	0.87%
12. Bell Canada 5.63% 27-Dec-2029	Fixed Income	0.82%
13. Enmax Corp 3.77% 06-Jun-2030	Fixed Income	0.81%
14. Telus Corp 5.60% 09-Jul-2030	Fixed Income	0.81%
15. Videotron Ltd 3.63% 2-Jan-2026	Cash and Cash Equivalent	0.75%

Note: This page is not complete without disclaimers on the next page.

Over 35,000 financial advisors have chosen CI Global Asset Management as a partner. We believe that Canadians have the best opportunity for investments success by using the services of a professional financial advisor. [Learn more at ci.com.](#)

¹ The risk level of a fund has been determined in accordance with a standardized risk classification methodology in National Instrument 81-102, that is based on the fund's historical volatility as measured by the 10-year standard deviation of the fund's returns. Where a fund has offered securities to the public for less than 10 years, the standardized methodology requires that the standard deviation of a reference mutual fund or index that reasonably approximates the fund's standard deviation be used to determine the fund's risk rating. Please note that historical performance may not be indicative of future returns and a fund's historical volatility may not be indicative of future volatility.

² Commissions, trailing commissions, management fees and expenses all may be associated with mutual fund investments. Please read the prospectus before investing. The indicated rates of return are the historical annual compounded total returns net of fees and expenses payable by the fund (except for figures of one year or less, which are simple total returns) including changes in security value and reinvestment of all dividends/distributions and do not take into account sales, redemption, distribution or optional charges or income taxes payable by any securityholder that would have reduced returns. Mutual funds are not guaranteed, their values change frequently, and past performance may not be repeated.

³ Please refer to the fund's simplified prospectus for distribution information.

⁵ The portfolio holdings are subject to change without notice and may only represent a small percentage of portfolio holdings. They are not recommendations to buy or sell any particular security.

The contents are not to be used or construed as investment advice or as an endorsement or recommendation of any entity of security discussed.

Certain statements contained in this communication are based in whole or in part on information provided by third parties and CI has taken reasonable steps to ensure their accuracy.

The rates of return are used only to illustrate the effects of the compound growth rate and are not intended to reflect future values or returns on investment in an investment fund.

The "Growth of \$10,000 invested" chart shows the final value of a hypothetical \$10,000 investment in securities in this class/series of the fund as at the end of the investment period indicated and is not intended to reflect future values or returns on investment in such securities.

Management Expense Ratio ("MER") represents the trailing 12-month management expense ratio, which reflects the cost of running the fund, inclusive of applicable taxes including HST, GST and QST (excluding commissions and other portfolio transaction costs) as a percentage of daily average net asset value the period, including the fund's proportionate share of any underlying fund(s) expenses, if applicable. The MER is reported in each fund's Management Report of Fund Performance ("MRFP"). MRFPs can be found within the Documents tab on ci.com.

CI Global Asset Management is a registered business name of CI Investments Inc.

©CI Investments Inc. 2025. All rights reserved.

Published January 2026